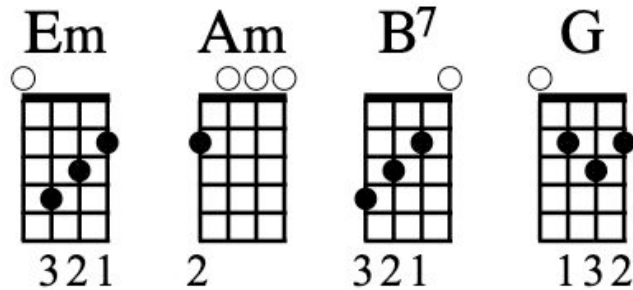


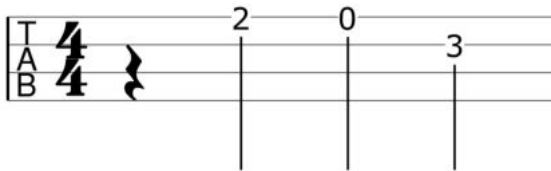
People Are Strange



The Doors



INTRO



VERSE 1

Em Am Em
People are strange when you're a stranger
Am Em B7 Em
Faces look ugly when you're alone
Em Am Em
Women seem wicked when you're unwanted
Am Em B7 Em
Streets are uneven when you're down

CHORUS

B7
When you're strange
G B7
Faces come out of the rain
B7
When you're strange
G B7
No one remembers your name
B7
When you're strange, When you're strange, When you're strange

VERSE 1

GUITAR SOLO

B7 B7 Em Em
B7 B7 Em Em

CHORUS

HARPSICHORD SOLO

Em Am Em
Am Em Em B7
Em Am Em
Am Em Em B7

CHORUS

HARPSICHORD SOLO

($\text{♪} = \text{♪} \text{♪}$)

The image shows a guitar tablature for a Harpsichord Solo. It consists of three systems of two staves each (TAB and B). The first system is numbered 1 and includes a triplet of eighth notes (0, 2, 3) on the first staff. The second system is numbered 2 and includes a triplet of eighth notes (2, 3, 2) on the first staff. The third system is numbered 3 and includes a triplet of eighth notes (2, 3, 2) on the first staff. The fourth system is numbered 4 and includes a triplet of eighth notes (2, 3, 2) on the first staff. The fifth system is numbered 5 and includes a triplet of eighth notes (3, 5, 3) on the first staff. The sixth system is numbered 6 and includes a triplet of eighth notes (5, 7, 5) on the first staff. The seventh system is numbered 7 and includes a triplet of eighth notes (5, 7, 5) on the first staff. The eighth system is numbered 8 and includes a triplet of eighth notes (2, 3, 2) on the first staff. The tablature includes various fret numbers (0, 2, 3, 4, 5, 6, 7) and techniques such as triplets, hammer-ons (H), and pull-offs (P). The piece ends with a double bar line.