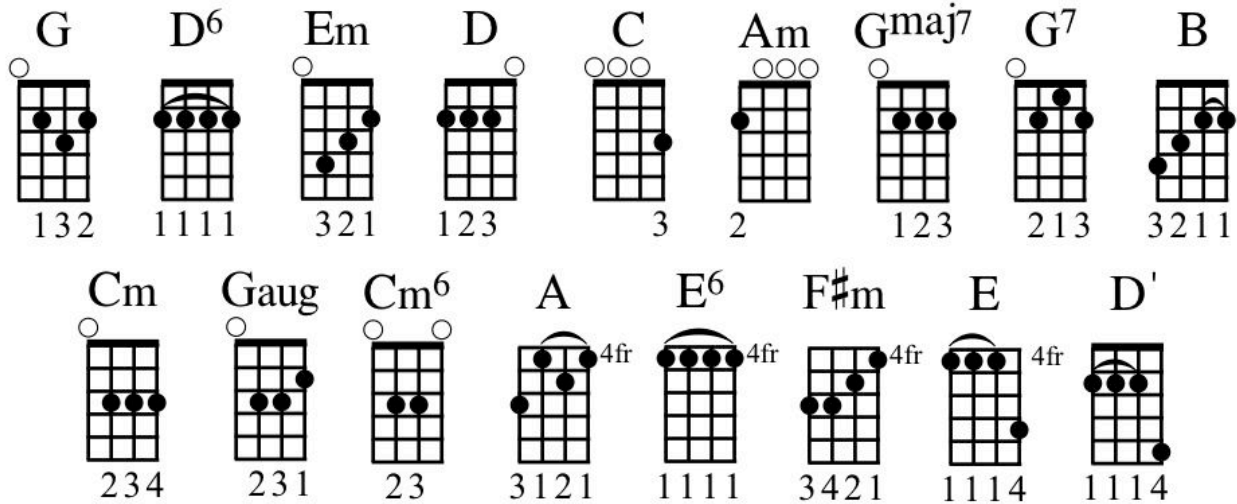


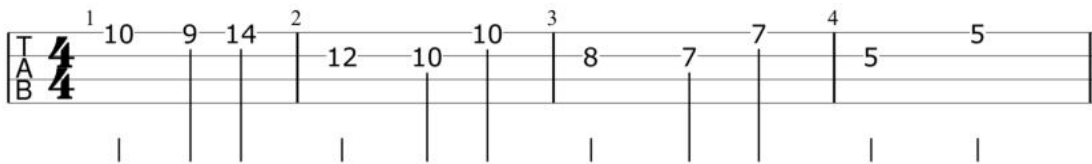
Welcome to the Black Parade



My Chemical Romance



INTRO



VERSE 1

G D6 Em D C
 When I was a young boy my father took me into the city
 G Am D
 To see a marching band
 G D6 Em D C
 He said, "Son, when you grow up, would you be the savior of the broken
 G Am D
 The beaten and the damned?"

VERSE 2

G D6 Em D C
 He said, "Will you defeat them? Your demons, and all the non-believers
 G Am D
 The plans that they have made?"
 G D6 Em D C
 "Because one day, I'll leave you, a phantom to lead you in the summer
 G Am D
 To join the black parade"

BREAK

G D6 Em D C G Am D

VERSE 1

BREAK 2

G
G D Em G
C D

VERSE 3

G Gmaj7 G7 C
Sometimes I get the feeling she's watching over me
C G D
And other times I feel like I should go
G Gmaj7 G7 C
And through it all, the rise and fall, the bodies in the streets
C G D
And when you're gone, we want you all to know

CHORUS

G D6 Em
We'll carry on, we'll carry on
D C
And though you're dead and gone, believe me
D G
Your memory will carry on
D6 Em D C
We'll carry on, and in my heart I can't contain it
D
The anthem won't explain it

VERSE 4

G Gmaj7 G7 C
A world that sends you reeling from decimated dreams
C G D
Your misery and hate will kill us all
G Gmaj7 G7 C
So paint it black and take it back, let's shout it loud and clear
C G D
Defiant to the end we hear the call

CHORUS

G D6 Em
To carry on, we'll carry on
D C
And though you're dead and gone, believe me
D G
Your memory will carry on
D6 Em D C
We'll carry on, and though you're broken and defeated
D
Your weary widow marches

MIDDLE

B Em
On and on, we carry through the fears
B Em
Disappointed faces of your peers
C Cm Gaug Cm6 Gaug G
Take a look at me, 'cause I could not care at all

VERSE 5

D6
Do or die, you'll never make me
Em D C
Because the world will never take my heart
G
Go and try, you'll never break me
C D G
We want it all, we wanna play this part
D6
I won't explain or say I'm sorry
Em D C
I'm unashamed, I'm gonna show my scars
G
Give a cheer for all the broken
C D A
Listen here, because it's who we are
E6
I'm just a man, I'm not a hero
F#m E D'
Just a boy, who had to sing this song
A E
I'm just a man, I'm not a hero, I don't care

CHORUS

A E6 F#m
To carry on, we'll carry on
E D'
And though you're dead and gone, believe me
E A
Your memory will carry on
E6 F#m E D'
We'll carry on, and though you're broken and defeated
E
Your weary widow marches

OUTRO

A E6
Do or die, you'll never make me
F#m E D'
Because the world will never take my heart

Go and try, you'll never break me
A
We want it all, we wanna play this part
A E6
Do or die, you'll never make me
F#m E D'
Because the world will never take my heart

Go and try, you'll never break me
A
We want it all, we wanna play this part